

Explicit Finite element approximation and invariant domain properties of hyperbolic systems

Jean-Luc Guermond, Bojan Popov, *Yong Yang*

Department of Mathematics
Texas A&M University

Fifth deal.II Users and Developers Workshop
Texas A&M University, College Station, Aug 3, 2015



Problem: Compressible Euler Equations

$$\begin{cases} \partial_t \rho + \partial_{x_j}(\rho u_j) & = 0, \\ \partial_t(\rho u_i) + \partial_{x_j}(\rho u_i u_j + p \delta_{ij}) & = 0, \\ \partial_t E + \partial_{x_j}((E + p)u_j) & = 0, \end{cases}$$

where $E = \rho e + \frac{1}{2}\rho u^2$ is the total energy, and e is the special internal energy.

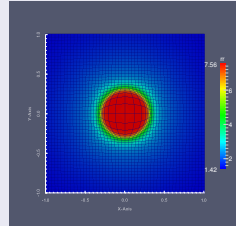
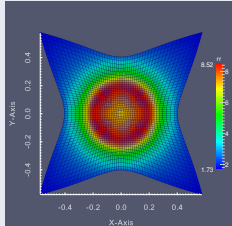
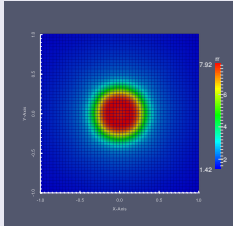
- 1 Equation of state: ideal gas $p = (\gamma - 1)\rho e$.
- 2 Proper initial and boundary condition.

Two Algorithms

- 1 The first method keep the positivity of density and internal energy;
- 2 The second method depends on local Riemann solver and keeps the invariant domain property;
- 3 The second method can be generalized to other hyperbolic systems;
- 4 Both of methods can be applied in Eulerian coord. , Lagrangian coord., and ALE coord with a little modification.



2d NOH problem



Future work

- Incorporate entropy viscosity.
- Advanced algorithm to move the mesh.
- Add remap stage.
- Extension of limiters to systems.
- Extension to DG (with no Riemann solver, exact or approximate).
- Convergence analysis, error estimates, BV bound on general meshes.

